

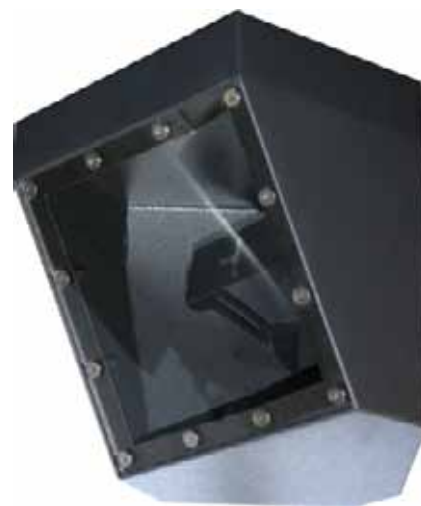
CMH02WP

CORRECTIONAL SERVICES HOUSINGS

Corner mount high security enclosures.

The CMH02WP is a weatherproof enclosure designed for Correctional centre applications. Featuring rugged construction, tamper resistance and with no centre projections the enclosures limit self harm issues.

The CMH02WP is designed to suit standard and larger camera and lens combinations such as Panasonic, Sony and Ikegami.



SPECIFICATIONS

Construction

1.6mm zincaneal.

Finish

Graphite ripple polyester powder coat.

Lens

6.0mm polycarbonate.

Access

3 x M6 post cap security screws.

Cable Entry

1 x 20mm opening on back panel.

Max. Camera Size

190mm. Maximum camera size is dependant on the angle of view required.

Weight

CMH02WP- 4.65kg.

OPTIONS

All housings are supplied with adjustable camera mounts. Tamper switches are available for all models as an optional extra.

Refer to housing Dimensions on page 43.

APPLICATIONS

Correctional services housing for mounting against ceiling and wall.



CMH02WP

PART NUMBER

DESCRIPTION

CMH02WP

Corner mount weatherproof housing.

TSWCMH02

Tamper switch to suit all CMH02 models.