

# LPAR530

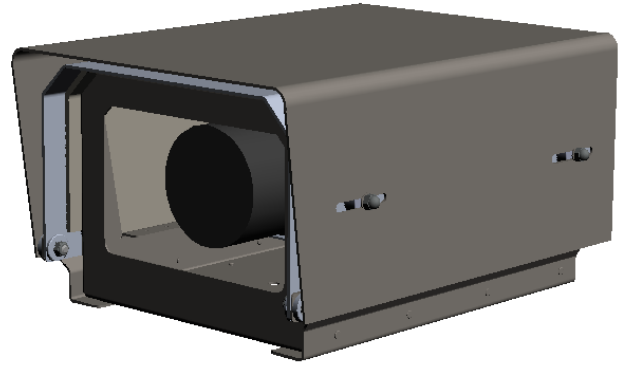
## Environmental Housing

### Environmental Housing

The LPAR530 Environmental housing has been designed for DSLR and Large CCTV camera applications. Featuring a heavy-duty construction with light materials as well as an extendable sunshield for heat deflection.

The LPAR530 is a more compact and robust unit to replace the LPAR310, LPAR480 and LPAR600 designs. Whilst still providing sufficient space for cameras and extra components, the LPAR530 does not lack bolstered security features.

This housing is designed for commercial and private users for temporary or permanent installation periods.



### OPTIONS

Fan heater, tamper switch, optic enhanced glass and controller bracket are available

### APPLICATIONS

External and internal time lapse video, site monitoring, or where a large full body camera is required

## SPECIFICATIONS

#### CONSTRUCTION

1.6mm and 2.0mm SS304, with 2.0mm alloy lid and sunshield

#### FINISH

Pearl White polyester powder coat

#### LENS

6.0mm glass lens (BK-7 or Borofloat glass available)

#### ACCESS

2 x Southco latches

#### CABLE ENTRY

5 x cable knock outs at the rear and one in the middle of the housing

#### MAX CAMERA SIZE

Suitable for DSLR cameras or 280mm CCTV cameras

#### WEIGHT

6.0Kg

#### IP RATING

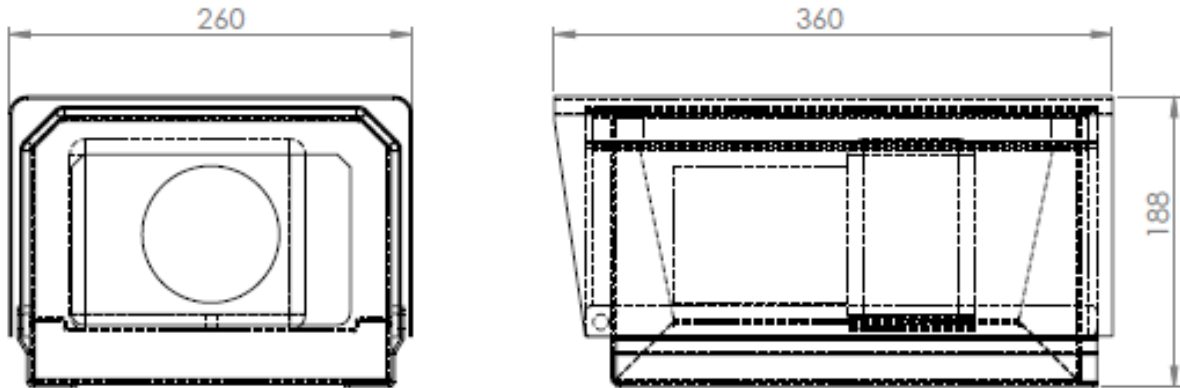
IP66

## PART NUMBER DESCRIPTION

LPAR530

Environmental housing

### DIMENSIONS



### INSTALLATION SUPPORT

The housing is designed to provide the installer with the flexibility of where the cable enters and exits.

It is suggested that the required amount of fixings should withstand up to 10kg of weight. Additionally the choice of fixing should depend on the type of bracket or fixing it is fixed to.

The housing offers 280mm of camera and lens space with sufficient space for any cabling configuration, any cameras that are larger should be discussed with us prior to installation.

In order to maintain the housing, it is suggested premium window glass is to be used to clean the lens, and taking care of the gasket is necessary to maintain IP rating.

